

MONTHLY MEMBERSHIP PROGRESS REPORT

LOCATION INDIA

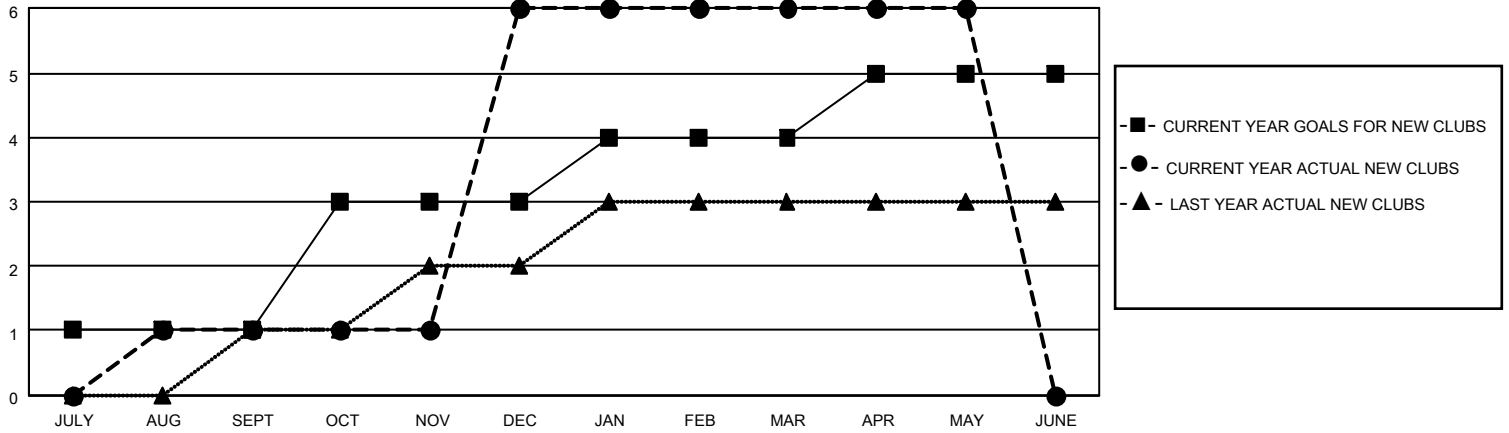
District 3234H2

Results as of: 5/31/2021

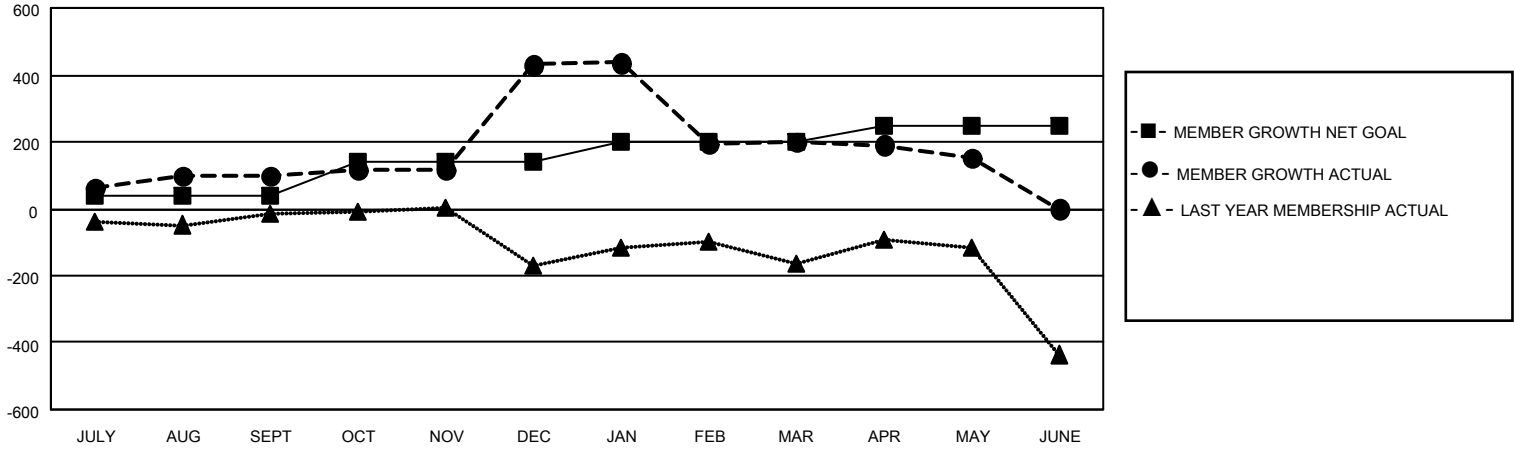
Clubs			
RESULTS FOR 2020-2021			
QUARTER	NEW CLUB GOAL	NEW CLUBS	DROPPED CLUBS
JULY/AUG/SEPT	1	1	0
OCT/NOV/DEC	2	5	0
JAN/FEB/MAR	1	0	8
APR/MAY/JUNE	1	0	0

Members			
RESULTS FOR 2020-2021			
QUARTER	MEMBER GROWTH NET GOAL	MEMBER GROWTH ACTUAL	DROPPED MEMBERS ACTUAL (including transfers)
JULY/AUG/SEPT	40	160	28
OCT/NOV/DEC	100	415	78
JAN/FEB/MAR	60	118	280
APR/MAY/JUNE	50	36	72

GOALS AND ACTUAL NEW CLUBS CUMULATIVE



GOALS AND ACTUAL MEMBERS CUMULATIVE



DROPPED CLUBS: 8	53 CLUBS OF 86 ADDED 1 OR MORE NEW MEMBERS	<u>GENDER DISTRIBUTION</u> MALE 2,414 (73.53%) FEMALE 869 (26.47%)
<u>DROPPED MEMBERS</u> DECEASED 10 CLUB CANCELLED 256 OTHER 192 TOTAL 458	CLICK HERE FOR CUMULATIVE MEMBERSHIP DATA	TOTAL FAMILY UNIT MEMBERS 1,609 FAMILY MEMBERS PAYING HALF DUES 943